



# METAL PARTS

## LEGS

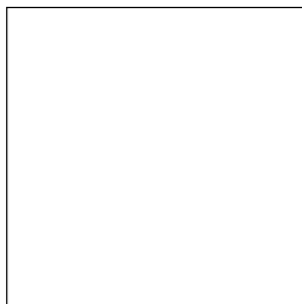


POLISHED

## M1 COLOURS



B00



W01

## M2 COLOURS



M56



V92



B40



B36



M38



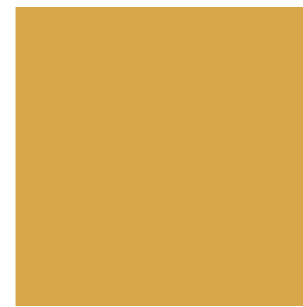
V74



B44



G49



Y62



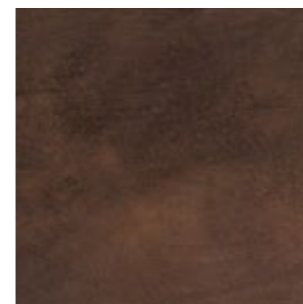
M44



M82



P70



Rust Brown



Rust Grey



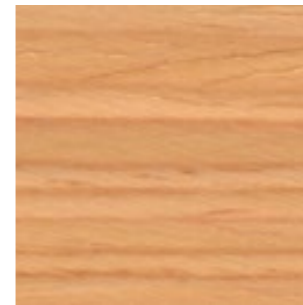
G42

# TABLETOPS

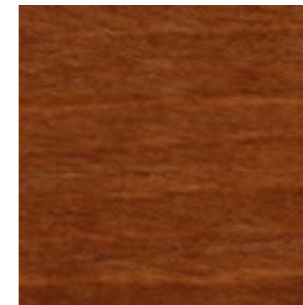
## WOOD VENEER

MDF core with natural wood surface.

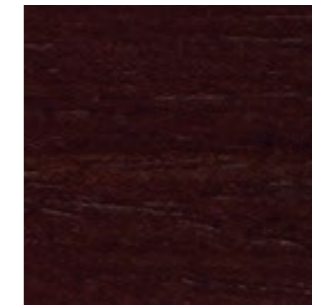
### OAK



Natural Stain



Walnut Stain

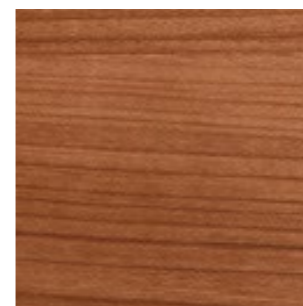


Wenge Stain



Black Stain

### WALNUT



Natural Stain

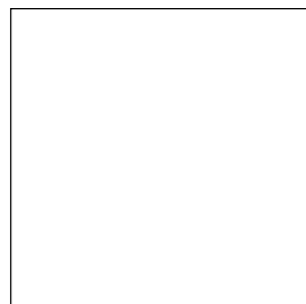
# TABLETOPS

LACQUERED COLOURS

## W1 COLOURS



B00



W01

## W2 COLOURS



M56



V92



B40



B36



M38



V74



B44



G49



Y62



M44



M82



G42



P70

# TABLETOPS

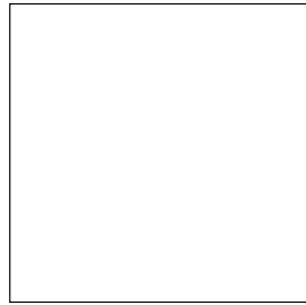
## MISCELLANEOUS MATERIALS

**SOLID FENIX®**  
12mm black core



Black

**SOLID HPL**  
12mm white core



White

**SOLID HPL**  
12mm sand core



Sand

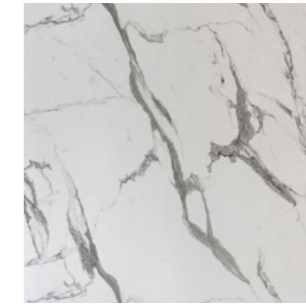
**SOLID HPL STONES**  
12mm



Dark brown Samas  
3482



Light brown Pulpis  
3447



White Olimpo  
3493

# G1 - ASIS

## TECHNICAL DATA

**Composition:**

100% polyester.

**Light fastness:**

5 - 6, ISO 105 B02, Method 2.

**Abrasion:**

100.000 Martindale EN ISO 12947-2.

**Resistance to pilling:**

4 - 5, ISO 12945-2.

**Rubbing fastness in humid state:**

4, ISO 105-X12.

**Rubbing solvents:**

4, ISO 105-X12.

**Tear strength:**

Warp 140N.

Weft 110N, EN ISO 13937-3.

**Flammability:**

EN 1021 - 1/2.

BS 5852 0.

BS 7176 Low Hazard.

CAL TB 117 Section 1.

NFPA 260 Class 1.

Regulation n° 118 UNECE Annexed 6.

IMO MSC.307 (88) Annexed I Part 8.

**Width:** 140cm

**Weight:** 335gr/m<sup>2</sup>

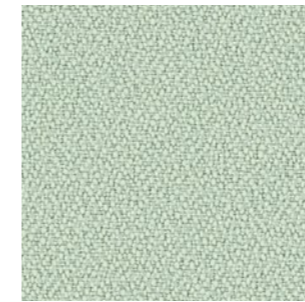


\*\*\*Batch to batch variations may occur within commercial tolerances.

**Note:**

- The real colours and tones of the fabrics may differ from the digital image due to the scan process and the colour calibration of the different screens. Always request real fabric samples before ordering.

- Consult our Fabric and Leather Matrix to know about the availability of this material by product line.



198



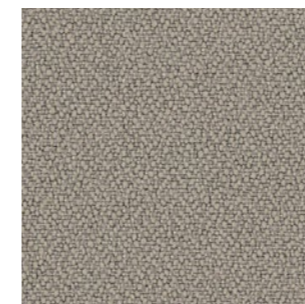
315



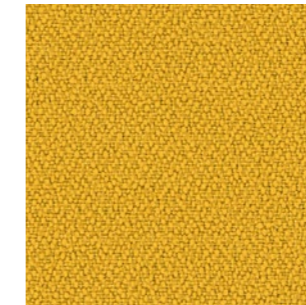
422



86



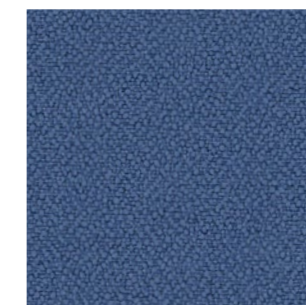
132



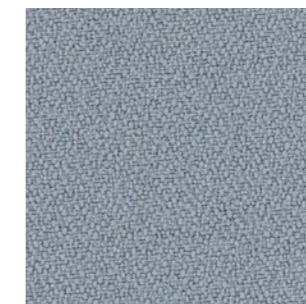
88



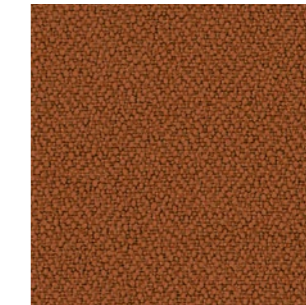
77



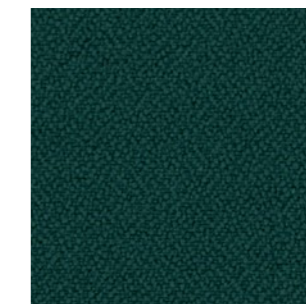
4



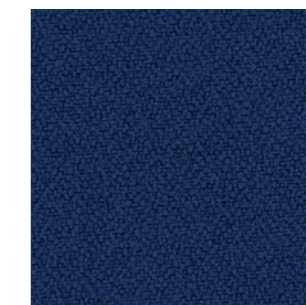
170



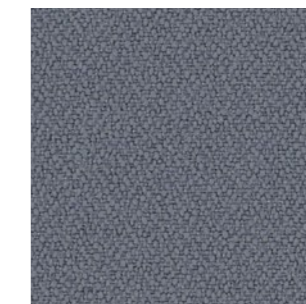
122



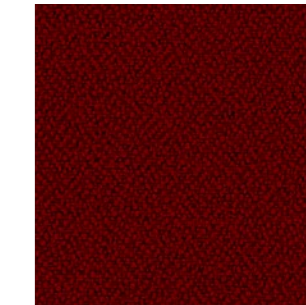
47



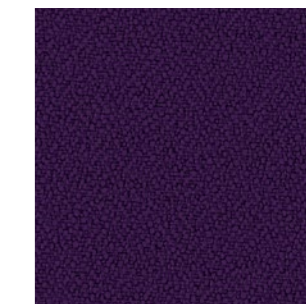
5



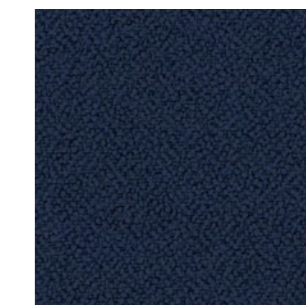
108



4011



292



26



9

# G2 - NEL

## TECHNICAL DATA

**Composition:**

95% PES, 5% cotton.

**Light fastness:**

5 - 6, UNE 40187 - BS1006-B2.

**Abrasion:**

>38.000 Martindale EN ISO 12947-2.

**Resistance to pilling:**

4 - 5, ISO 12945-1.

**Rubbing fastness in humid state:**

4 - 5, ISO 105-D01.

**Rubbing solvents:**

4 - 5, ISO 105-D01.

**Tear strength:**

Warp 2mm.

Wet 2,1mm, EN ISO 13937-2.

**Characteristics:**

Instalimp® treatment.

**Width:** ±140cm

**Weight:** ±445gr/m<sup>2</sup>



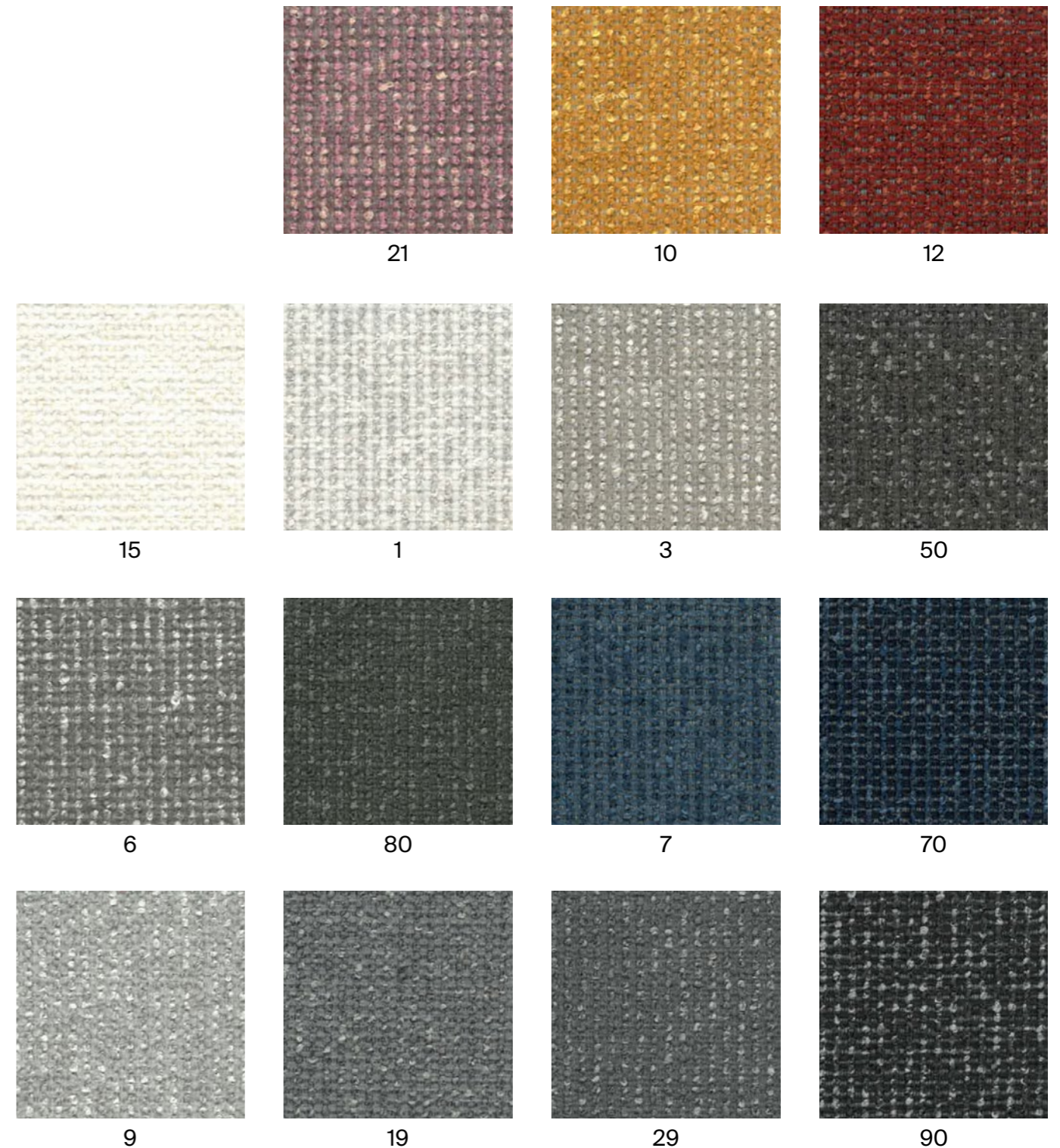
\*\*\*Batch to batch variations may occur within commercial tolerances.



**Note:**

- The real colours and tones of the fabrics may differ from the digital image due to the scan process and the colour calibration of the different screens. Always request real fabric samples before ordering.

- Consult our Fabric and Leather Matrix to know about the availability of this material by product line.



# G2 - ARS

## TECHNICAL DATA

- Composition:**  
100% polyester.
- Light fastness:**  
5, ISO 105 B02, Method 2.
- Abrasion:**  
90.000 Martindale EN ISO 12947-2.
- Resistance to pilling:**  
4 - 5, ISO 12945-2.
- Rubbing fastness in humid state:**  
5, ISO 105-X12.
- Rubbing solvents:**  
4 - 5, ISO 105-X12.
- Seam strength:**  
Warp 3,7mm.  
Weft 4,0mm, EN ISO 13936-2.
- Seam strength:**  
Warp 75,6N.  
Weft 65,1N, EN ISO 13937-3.
- Flammability:**  
EN 1021 - 1 (cigarette).
- Environment:**  
OEKO-TEX® Standard 100.

**Width:** 140cm  
**Weight:** 250gr/m<sup>2</sup>



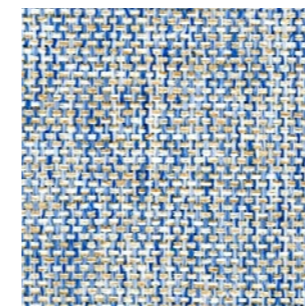
\*\*\*Batch to batch variations may occur within commercial tolerances.



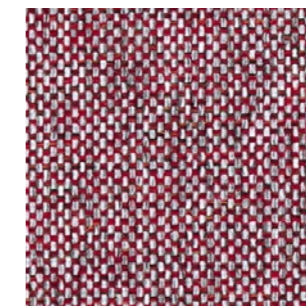
Note:  
- The real colours and tones of the fabrics may differ from the digital image due to the scan process and the colour calibration of the different screens. Always request real fabric samples before ordering.  
- Consult our Fabric and Leather Matrix to know about the availability of this material by product line.



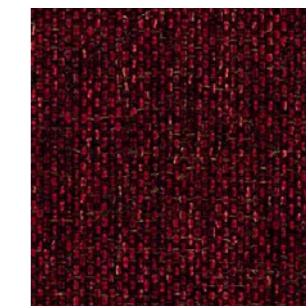
90



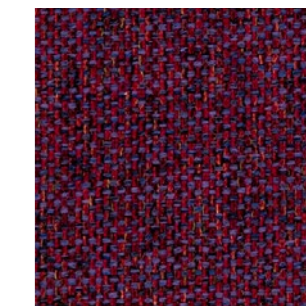
74



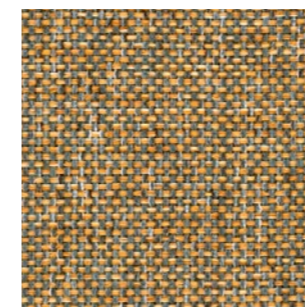
27



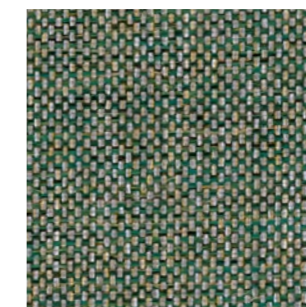
59



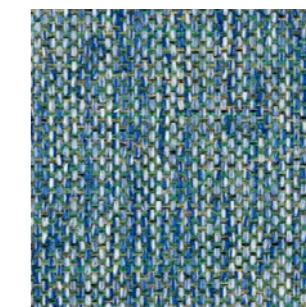
68



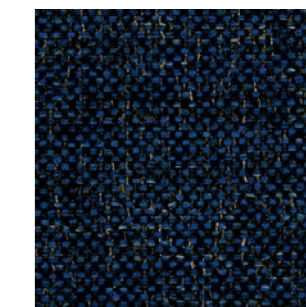
45



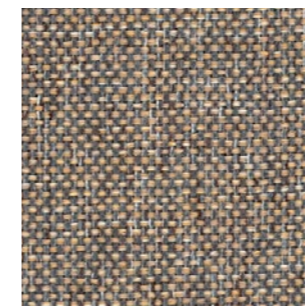
35



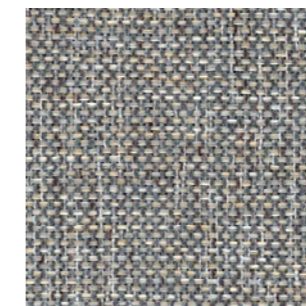
75



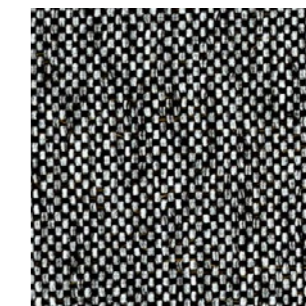
79



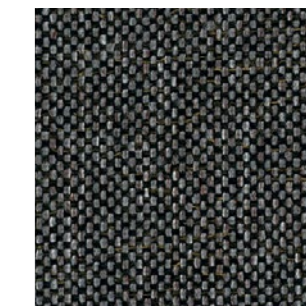
87



88



98



99

# G2 - PIXEL

## TECHNICAL DATA

**Composition:**

100% polyolefin.

**Light fastness:**

5 - 6, UNE-EN ISO 105-B02. Method 2.

**Abrasion:**

40.000 Martindale EN ISO 12947-2.

**Resistance to pilling:**

4 - 5, UNE-EN 12945-2.

**Dye fastness to rubbing:**

Wet 4 - 5.

Dry 4 - 5, UNE-EN ISO 105-X12.

**Tear Resistance:**

Warp 120N.

Weft 130N UNE-EN ISO 13937-3.

**Flammability:**

EN 1021-1 (cigarette)

BS 5852-0 (cigarette)

CAL TB 117 Section 1.

NFPA 260 Clase 1.

**Width:** 140cm

**Weight:** 255gr/m<sup>2</sup>



\*\*\*Batch to batch variations may occur within commercial tolerances.



**Note:**

- The real colours and tones of the fabrics may differ from the digital image due to the scan process and the colour calibration of the different screens. Always request real fabric samples before ordering.

- Consult our Fabric and Leather Matrix to know about the availability of this material by product line.



# G2 - CORA

## TECHNICAL DATA

**Composition:**

100% polyester.

**Light fastness:**

5 EN ISO 105-B02, Method 2.

**Abrasion:**

83.000 Martindale EN ISO 12947-1, 2.

**Resistance to pilling:**

4, EN ISO 12945-2.

**Rubbing fastness in humid state:**

5, ISO 105-X12.

**Rubbing solvents:**

5, ISO 105-X12.

**Seam strength:**

Warp 2,5mm.

Weft 3,7mm, ISO 13936-2.

**Tear strength:**

Warp exceed 154,2N.

Weft exceed 112,3N, EN ISO 13937-3.

**Width:** 140cm

**Weight:** 330gr/m<sup>2</sup>



\*\*\*Batch to batch variations may occur within commercial tolerances.



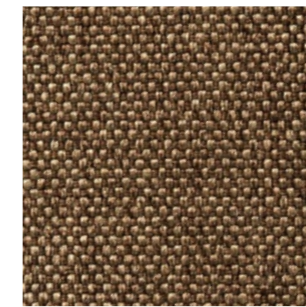
**Note:**

- The real colours and tones of the fabrics may differ from the digital image due to the scan process and the colour calibration of the different screens. Always request real fabric samples before ordering.

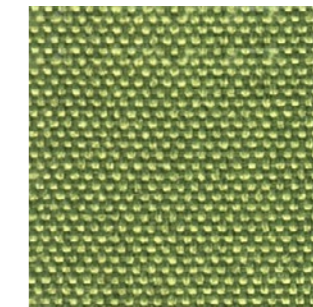
- Consult our Fabric and Leather Matrix to know about the availability of this material by product line.



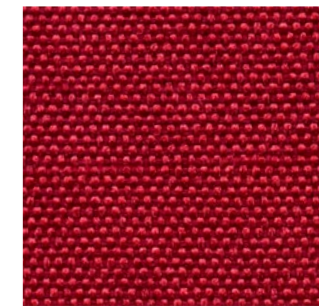
21



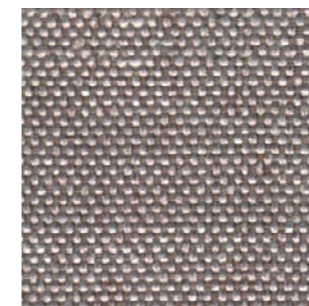
40



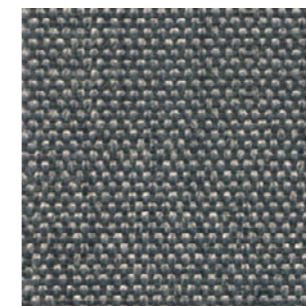
32



60



12



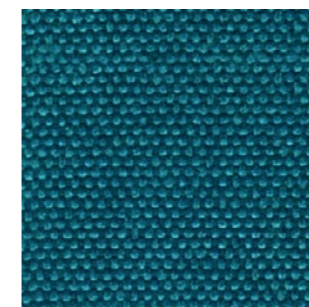
14



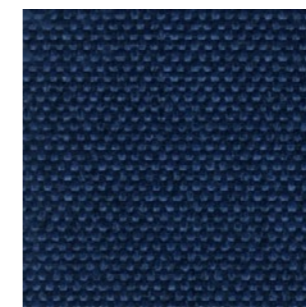
115



27



17



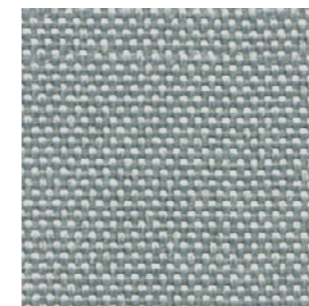
18



37



38



3



65



20



2

# G2 - HILTON

## TECHNICAL DATA

**Composition:**  
100% polyester.

**Light fastness:**  
4, ISO 105 B02.

**Abrasion:**  
>25.000 Martindale ISO 12947-2.

**Resistance to pilling:**  
4 - 5, ISO 12945-2.

**Tear strength:**  
Warp 63N.  
Weft 63N, ISO13937-3.

**Dye fastness to rubbing:**  
Wet 4 - 5. Dry 4 - 5, ISO 105X12.

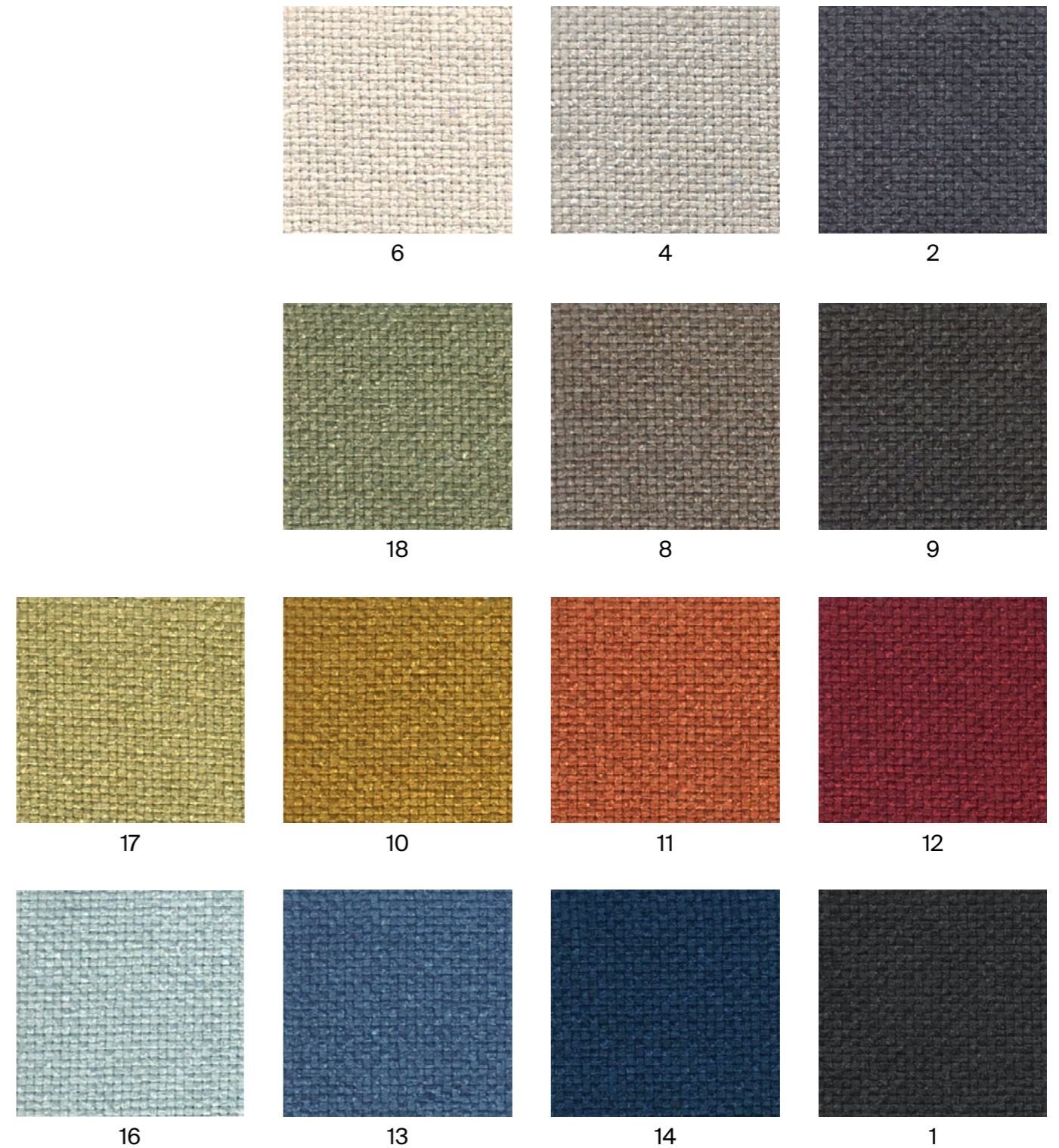
**Width:** 140cm  
**Weight:** 380gr/m<sup>2</sup>



\*\*\*Batch to batch variations may occur within commercial tolerances.



Note:  
- The real colours and tones of the fabrics may differ from the digital image due to the scan process and the colour calibration of the different screens. Always request real fabric samples before ordering.  
- Consult our Fabric and Leather Matrix to know about the availability of this material by product line.



# G2 - ADDO

## TECHNICAL DATA

**Composition:**

80% polyester, 20% cotton.

**Light fastness:**

5, ISO 105 B02, Method 2.

**Abrasion:**

40.000 Martindale ISO 12947-1, 2.

**Resistance to pilling:**

4, ISO 12945-2.

**Rubbing fastness in humid state:**

3, ISO 105-X12.

**Rubbing solvents:**

4 - 5, ISO 105-X12.

**Seam strength:**

Warp 3mm.

Weft 2mm, ISO 13936-2.

**Tear strength:**

Warp exceed 175,1N.

Weft exceed 120,7N, EN ISO 13937-3.

**Flammability:**

EN 1021 - 1 (cigarette).

**Width:** 140cm

**Weight:** 365gr/m<sup>2</sup>



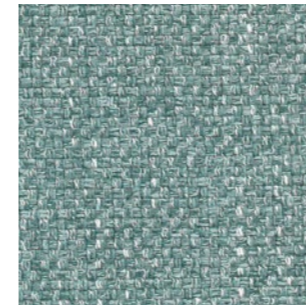
\*\*\*Batch to batch variations may occur within commercial tolerances.



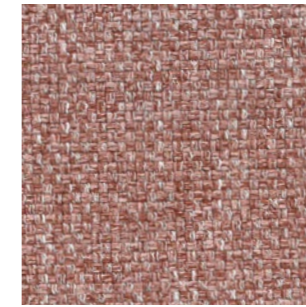
**Note:**

- The real colours and tones of the fabrics may differ from the digital image due to the scan process and the colour calibration of the different screens. Always request real fabric samples before ordering.

- Consult our Fabric and Leather Matrix to know about the availability of this material by product line.



12



10



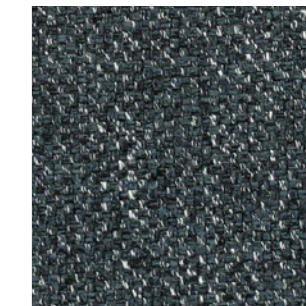
14



15



16



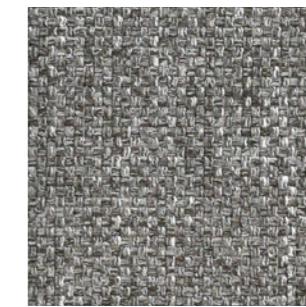
11



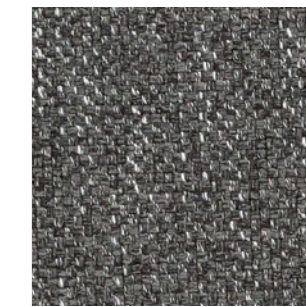
5



6



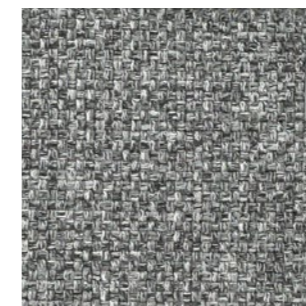
7



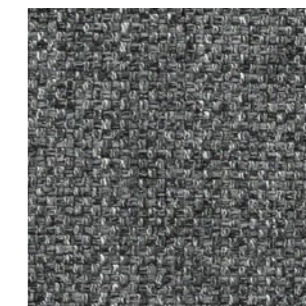
8



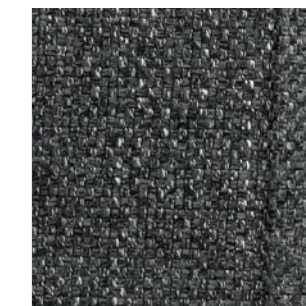
4



3



30



1

# G3 - APTA

## TECHNICAL DATA

**Composition:**  
71% polyester, 18% modacrylic, 8% recycled cotton, 3% polyamide.

**Light fastness:**  
4 - 5, ISO 105 B02.

**Abrasion:**  
60.000 Martindale ISO 12947.

**Resistance to pilling:**  
5, ISO 12945-2.

**Fastness to rubbing:**  
4 - 5, ISO 105-X12.

**Tensile strength:**  
>350N, ISO 13934-1.

**Tear strength:**  
>20N, BS 4303.  
>3N, DIN 53859-5.

**Flammability:**  
EN 1021 - 1 (cigarette).  
EN 1021 - 2 (match).  
BS 5852 (cigarette).

**Environment:**  
Oeko-Tex® standard 100.

**Characteristics:**  
Anti-stain protection.  
Antibacterial and virus protection protection.

**Width:** ±140cm  
**Weight:** ±518gr/m



\*\*\*Batch to batch variations may occur within commercial tolerances.



**Note:**  
- The real colours and tones of the fabrics may differ from the digital image due to the scan process and the colour calibration of the different screens. Always request real fabric samples before ordering.  
- Consult our Fabric and Leather Matrix to know about the availability of this material by product line.



62

625



156

266

618



324

80

111

43

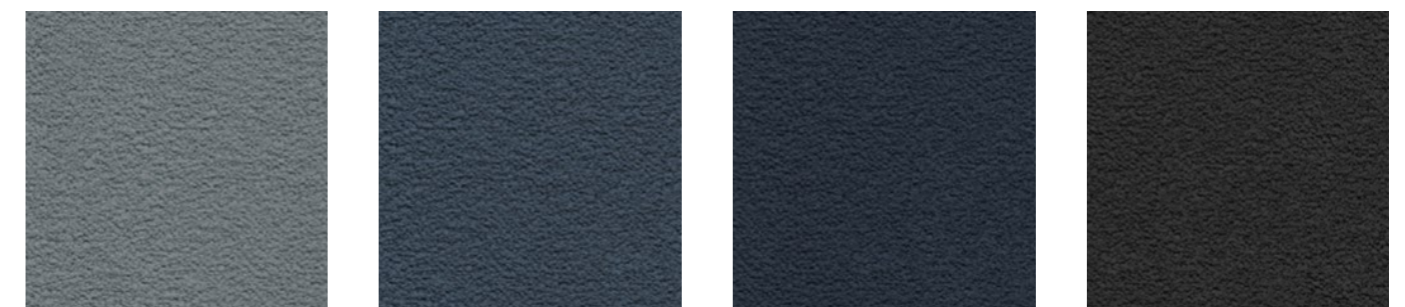


336

13

271

339



602

11

60

15

# G3 - CURA

## TECHNICAL DATA

**Composition:**

98% recycled polyester, 2% polyester.

**Light fastness:**

5 - 8, ISO 105 B02.

**Abrasion:**

100.000 Martindale ISO 12947-2.

**Resistance to pilling:**

4 - 5, ISO 12945-2.

**Fastness to rubbing:**

Wet 4 - 5.

Dry 4 - 5, ISO 105-X12.

**Flammability:**

EN 1021 - 1 (cigarette).

EN 1021 - 2 (match).

CA TB 117-2013.

ASTM E 84 Class 1.

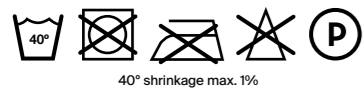
**Environment:**

Oeko-Tex® standard 100.

Complies with EU Ecolabel.

**Width:** ±140cm

**Weight:** ±420gr/m<sup>2</sup>



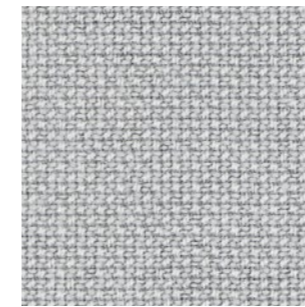
\*\*\*Batch to batch variations may occur within commercial tolerances.



**Note:**

- The real colours and tones of the fabrics may differ from the digital image due to the scan process and the colour calibration of the different screens. Always request real fabric samples before ordering.

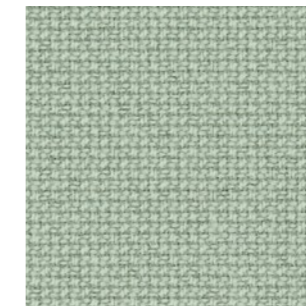
- Consult our Fabric and Leather Matrix to know about the availability of this material by product line.



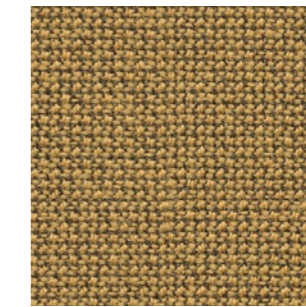
60000



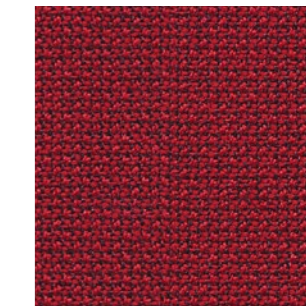
61232



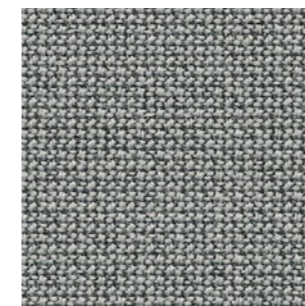
68262



62083



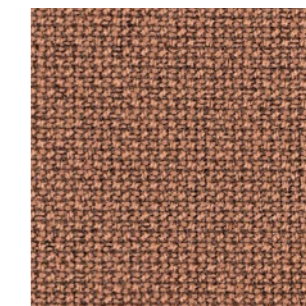
64013



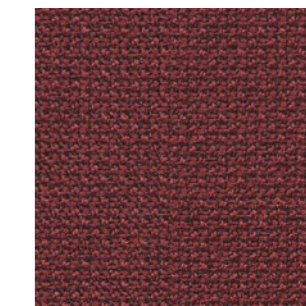
60112



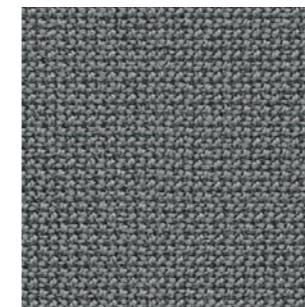
68181



61257



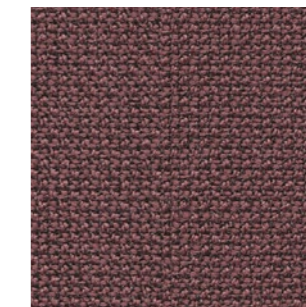
64196



60110



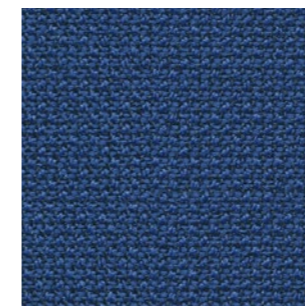
68261



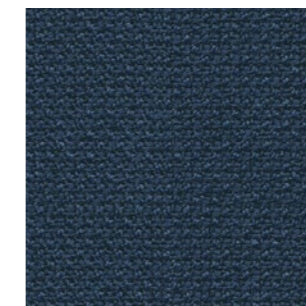
64195



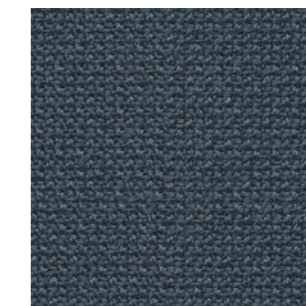
61169



65105



66170



66166



60999

# G3 - IBER

## TECHNICAL DATA

- Composition:**  
69% PES, 30% cotton, 1% polyamide.
- Light fastness:**  
4 - 5, ISO 105 B02.
- Abrasion:**  
70.000 Martindale ISO 12947 - BS 2543.
- Resistance to pilling:**  
4 - 5, ISO 12945-2.
- Fastness to rubbing:**  
Wet 4 - 5.  
Dry 4.
- Seam splinge:**  
Warp <3mm.  
Weft <4mm.
- Flammability:**  
BS 5852 Part 1.
- Environment:**  
Oeko-Tex® standard 100.

**Width:** ±140cm  
**Weight:** ±570gr/m<sup>2</sup>



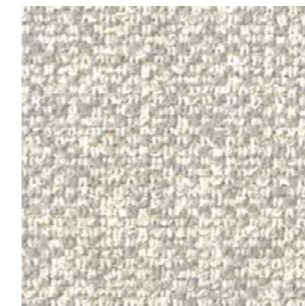
\*\*\*Batch to batch variations may occur within commercial tolerances.



Note:  
- The real colours and tones of the fabrics may differ from the digital image due to the scan process and the colour calibration of the different screens. Always request real fabric samples before ordering.  
- Consult our Fabric and Leather Matrix to know about the availability of this material by product line.



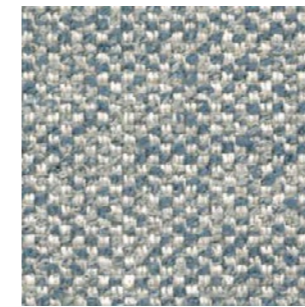
01



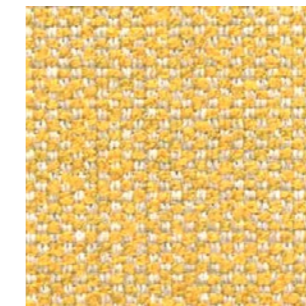
09



19



07



10



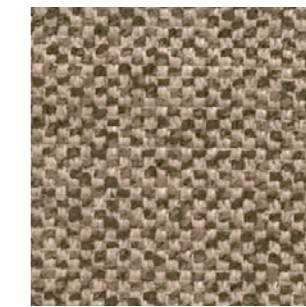
04



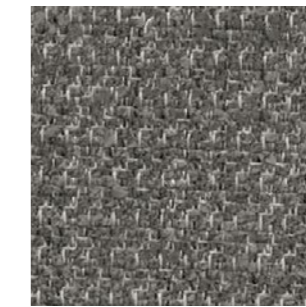
37



14



55



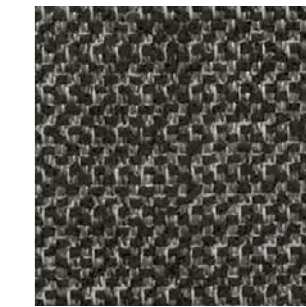
91



18



38



90

# G3 - CALMA

## TECHNICAL DATA

**Composition:**

Topcoat: 70% Vinyl, 30% PU.  
 Backing: 100% Microfiber Polyester.

**Light fastness:**

>4.

**Abrasion:**

>100.000 Martindale.

**Breaking strength:**

Warp >180N.  
 Weft >330N, ISO 1421.

**Tear strength:**

Warp >25N/cm.  
 Weft >28N/cm, ISO 4674-1.

**Flex Bally:**

>100.000 cycles.

**Width:** 140cm.

**Weight:** 853gr/m<sup>2</sup>.



\*\*\*Batch to batch variations may occur within commercial tolerances.

**Note:**

- The real colours and tones of the fabrics may differ from the digital image due to the scan process and the colour calibration of the different screens. Always request real fabric samples before ordering.
- Consult our Fabric and Leather Matrix to know about the availability of this material by product line.



# G3 - RIVET

By Camira

## TECHNICAL DATA

**Composition:**  
100% REPREVE® recycled polyester.

**Light fastness:**  
6, EN ISO 105-B02, Method 3.

**Abrasion:**  
≥80.000 Martindale EN ISO 12947-2.

**Fastness to rubbing:**  
Wet 4.  
Dry 4, ISO 105 X12.

**Flammability:**  
EN 1021 - 1 (cigarette).  
EN 1021 - 2 (match).  
BS 7176 Low Hazard.  
UNI 9175 Class 1 IM.

**Environment:**  
Complies with EU Ecolabel.  
Certificate Indoor Advantage™ Gold.

**Width:** 140cm  
**Weight:** 280gr/m<sup>2</sup>

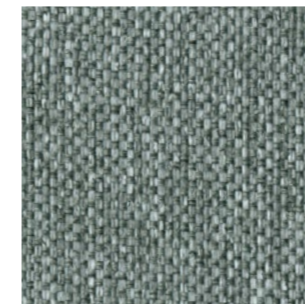


\*\*\*Batch to batch variations may occur within commercial tolerances.

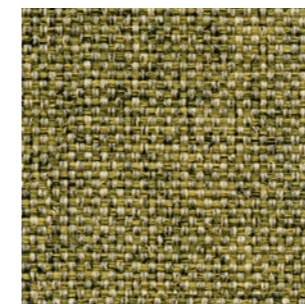


**100%**  
recycled material  
Post Consumer  
Recycled  
Polyester

Note:  
- The real colours and tones of the fabrics may differ from the digital image due to the scan process and the colour calibration of the different screens. Always request real fabric samples before ordering.  
- Consult our Fabric and Leather Matrix to know about the availability of this material by product line.



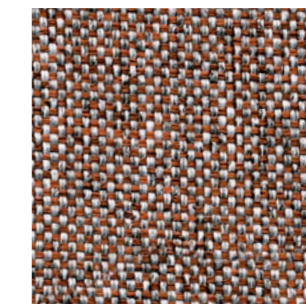
26



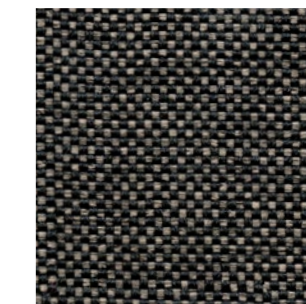
10



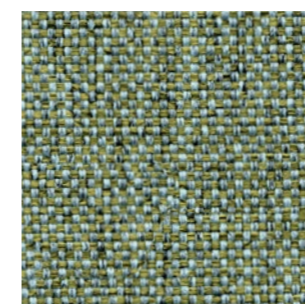
14



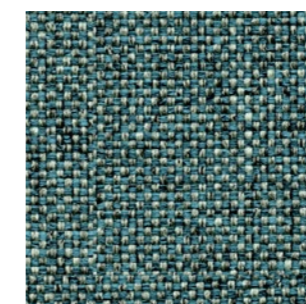
09



36



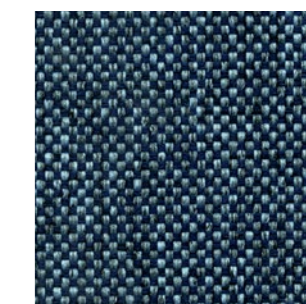
11



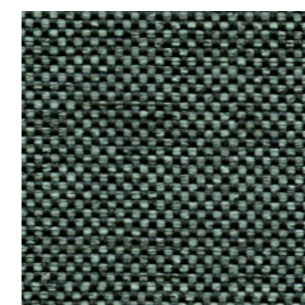
21



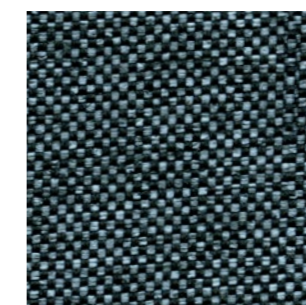
27



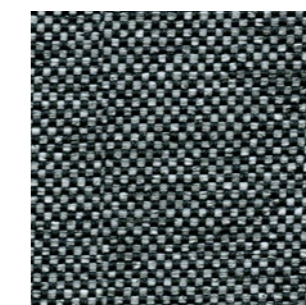
24



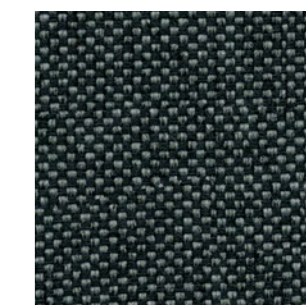
34



48



50



37

# G3 - ERA

By Camira

## TECHNICAL DATA

**Composition:**

100% polyester.

**Light fastness:**

5, EN ISO 105 B02.

**Abrasion:**

≥100.000 Martindale EN ISO 12947.

**Fastness to rubbing:**

Wet 4.

Dry 4, ISO 105 X12.

**Flammability:**

EN 1021 - 1 (cigarette).

EN 1021 - 2 (match).

BS 7176 Low Hazard.

EN 13501-1 Adhered Class B, s1, d0.

EN 13501-1 Un-adhered Class C, s1, d0.

**Environment:**

OEKO-TEX® Standard 100.

Certificate Indoor Advantage™ Gold.

**Width:** 140cm

**Weight:** 320gr/m<sup>2</sup>



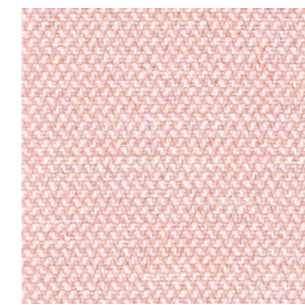
\*\*\*Batch to batch variations may occur within commercial tolerances.



**Note:**

- The real colours and tones of the fabrics may differ from the digital image due to the scan process and the colour calibration of the different screens. Always request real fabric samples before ordering.

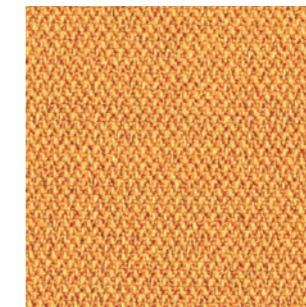
- Consult our Fabric and Leather Matrix to know about the availability of this material by product line.



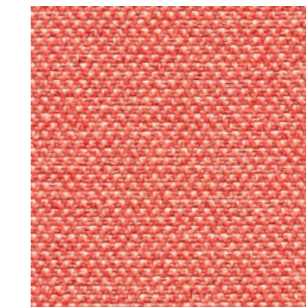
19



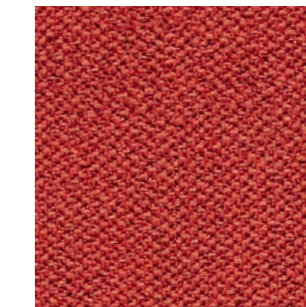
3



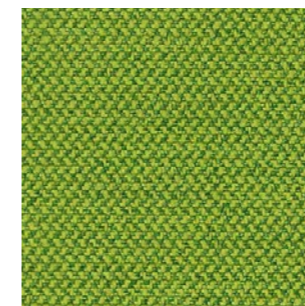
27



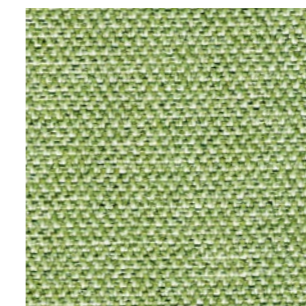
26



29



16



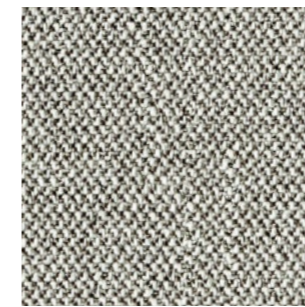
34



1



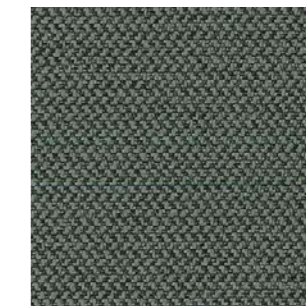
2



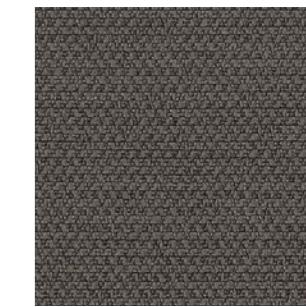
45



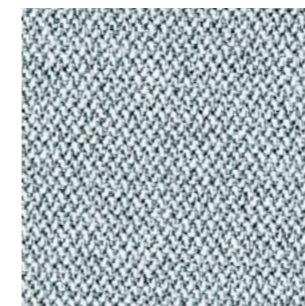
11



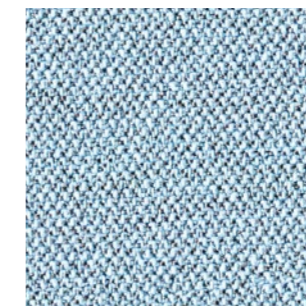
13



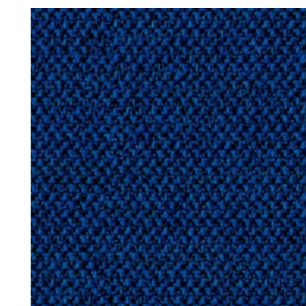
21



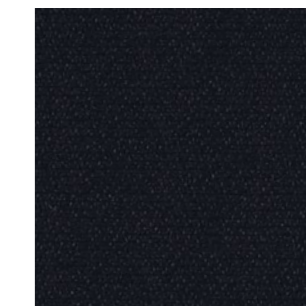
46



39



40



14

# G3 - MEDLEY

By Gabriel

## TECHNICAL DATA

**Composition:**

100% polyester.

**Light fastness:**

5 - 7, EN ISO 105 B02.

**Abrasion:**

75.000 Martindale EN ISO 12947-2.

**Resistance to pilling:**

4, EN ISO 12945-2.

**Fastness to rubbing:**

Wet 4 - 5.

Dry 4 - 5, ISO 105 X12.

**Flammability:**

BS EN 1021 1&2 Cigarette and Match.

BS EN 1021-1 Cigarette.

BS 5852 Part 1 0,1 Cigarette and Match.

BS 476 Part 7, class 2.

Class Uno UNI 9174 - UNI 8457.

ÖNORM B 3825-B2-3800-Q1 UK.

CA TB 117.

ASTM E 84.

**Environment:**

Oeko-Tex® standard 100

100% free of heavy metals.

**Width:** 140cm

**Weight:** 510gr/m<sup>2</sup>



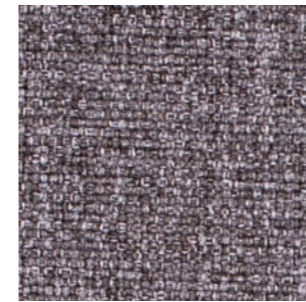
\*\*\*Batch to batch variations may occur within commercial tolerances.



**Note:**

- The real colours and tones of the fabrics may differ from the digital image due to the scan process and the colour calibration of the different screens. Always request real fabric samples before ordering.

- Consult our Fabric and Leather Matrix to know about the availability of this material by product line.



65011



62054



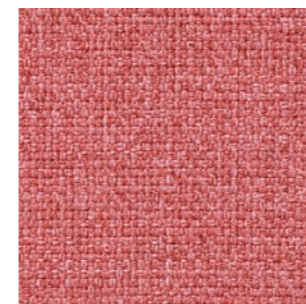
61003



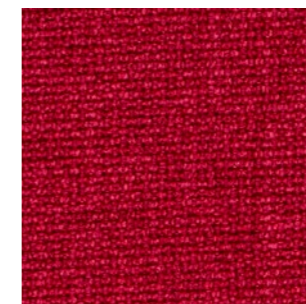
67002



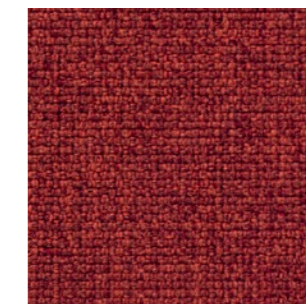
68005



63064



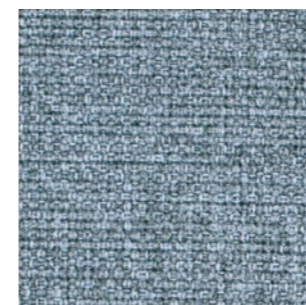
64019



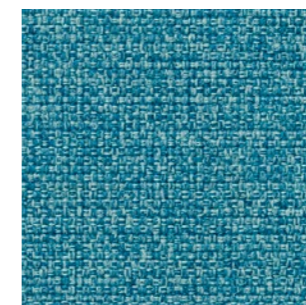
63016



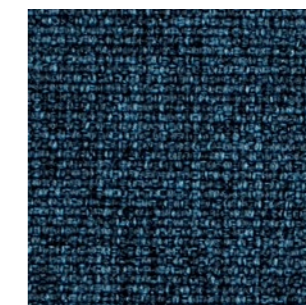
63063



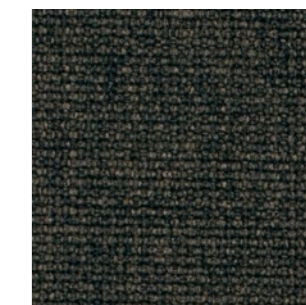
66008



67006



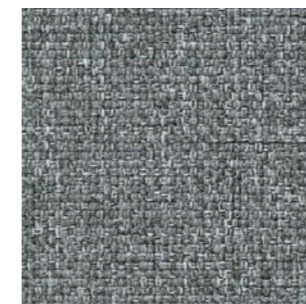
66010



61004



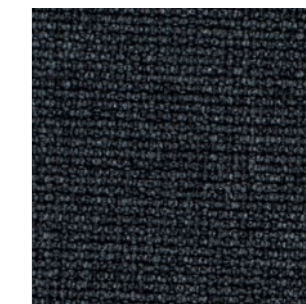
60003



60167



60004



60999

# G4 - MAIN LINE FLAX

By Camira

## TECHNICAL DATA

**Composition:**

75% virgin wool, 25% flax.

**Light fastness:**

5, ISO 105 B02.

**Abrasion:**

≥50.000 Martindale EN ISO 12947-2:1999.

**Resistance to pilling:**

4 - 5, ISO 12945-2.

**Fastness to rubbing:**

Wet 3.

Dry 4, ISO 105 X12.

**Flammability:**

EN 1021 - 1 (cigarette).

EN 1021 - 2 (match).

BS 7176 Low Hazard.

BS 5852 Ignition source 5.

BS 7176 Medium Hazard.

NF D 60-013.

ÖNORM B 3825 & A 3800-1.

UNI 9175 Class 1 IM.

BS 5867-2: Type B Curtains & Drapes.

IMO FTP Code (Part 8).

**Environment:**

Complies with EU Ecolabel.

Certificate Indoor Advantage™ Gold.

**Width:** 140cm

**Weight:** 437gr/m<sup>2</sup>



\*\*\*Batch to batch variations may occur within commercial tolerances.



**Note:**

- The real colours and tones of the fabrics may differ from the digital image due to the scan process and the colour calibration of the different screens. Always request real fabric samples before ordering.

- Consult our Fabric and Leather Matrix to know about the availability of this material by product line.



# G4 - CONNECT

By Gabriel

## TECHNICAL DATA

**Composition:**

48% wool, 41% recycled polyester, 9% polyamide, 2% polyester.

**Light fastness:**

5 - 7, ISO 105 B02.

**Abrasion:**

90,000 Martindale EN ISO 12947-2.

**Resistance to pilling:**

4 - 5, ISO 12945-2.

**Fastness to rubbing:**

Wet 4 - 5.

Dry 4 - 5, ISO 105 X12.

**Flammability:**

EN 1021 - 1 (cigarette).

EN 1021 - 2 (match).

BS 5852 Crib 5.

CA TB 117-2013.

Class Uno UNI 9175 Class 1 | EMME.

**Environment:**

Oeko-Tex® standard 100.

Complies with EU Ecolabel.

**Width:** 140cm

**Weight:** 370gr/m<sup>2</sup>



\*\*\*Batch to batch variations may occur within commercial tolerances.



**41%** recycled material  
Post Consumer Recycled Polyester

**Note:**

- The real colours and tones of the fabrics may differ from the digital image due to the scan process and the colour calibration of the different screens. Always request real fabric samples before ordering.

- Consult our Fabric and Leather Matrix to know about the availability of this material by product line.



# G4 - VALENCIA

By Spradling

## TECHNICAL DATA

**Composition:**

Topcoat: 100% Vinyl.  
 Backing: 100% Polyester Hi-Loft<sup>2</sup>™.

**Light fastness:**

1000 hours, XENOTEST DIN 54004/NTC 1479.

**Abrasion:**

300.000 cycles de Martindale EN ISO 12947 Part 2.

**Cold crack resistance:**

-23°C.

**Characteristics:**

Antimicrobial protection.  
 Antibacterial protection.  
 Antimycotic protection.

**Flammability:**

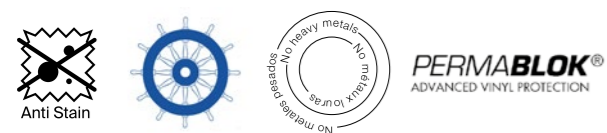
EU: EN 1021 Part 1 y 2.  
 ES: UNE 23.727-90 1R/M.2.  
 FR: NF P 92-503/M2.  
 DE: DIN 4102 B2.  
 IT: UNI 9175 (1987) / UNI 9175/FA1 (1994) Classe 1.IM (UNO I EMME).  
 AT: ÖNORM B 3825, Gruppe 1 - Schwerbrennbares Verhalten.  
 AT: ÖNORM A 3800 Teil 1, Qualmbildungsklasse Q1 - schwachqualmend.  
 IMO FTP 2010 Code MSC.307 (88) Part 8 3.1 & 3.2.  
 US: FMVSS 302.  
 US: FAR 25/853.  
 (MED) Marine Equipment Directive.  
 ECE R118.02 (replaces Directive 95/28/CE) Annexes 6, 7 & 8.  
 EN 71-2:2006+A1:2007 - Toy safety - Parte 2: Inflammability.

**Width:** 140cm

**Weight:** 685gr/m<sup>2</sup>



\*\*\*Batch to batch variations may occur within commercial tolerances.



**Note:**

- The real colours and tones of the fabrics may differ from the digital image due to the scan process and the colour calibration of the different screens. Always request real fabric samples before ordering.
- Consult our Fabric and Leather Matrix to know about the availability of this material by product line.



# G4 - STEP

By Gabriel

## TECHNICAL DATA

**Composition:**  
100% trevira CS.

**Light fastness:**  
5 - 7, ISO 105 B02.

**Abrasion:**  
100.000 Martindale EN ISO 12947.

**Resistance to pilling:**  
4 - 5, ISO 12945-2.

**Fastness to rubbing:**  
Wet 4 - 5. - Dry 4 - 5, ISO 105 X12.

**Flammability:**  
IMO MSC 307(88) Annex 1 part 8.  
MED.  
Certificate IMO.  
DIN 4102 B1.  
NFP 92-503/504/505 M1.  
BS EN 1021 1&2 Cigarette and Match.  
BS EN 1021-1 Cigarette.  
BS 5852 Part 1 0,1 Cigarette and Match.  
BS 5852 Crib 5.  
ÖNORM B 3825-B1-3800-Q1 UK.  
FAR/JAR 25.853 (a) (i) (ii).  
BS 7176 Medium hazard.  
AM 18 - NF D 60-013-(only for fabric).  
CA TB 117-2013.  
Class Uno UNI 9175 Class 1 I EMME.  
DIN EN 13501-1 B-s1,d0.

**Environment:**  
Oeko-Tex - EU Ecolabel - 100% free of heavy metals.

**Width:** 140cm  
**Weight:** 470gr/m<sup>2</sup>

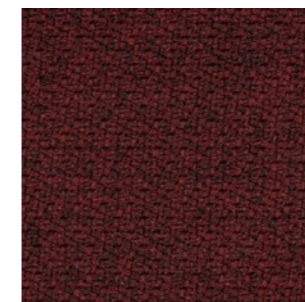


60° shrinkage max. 3%

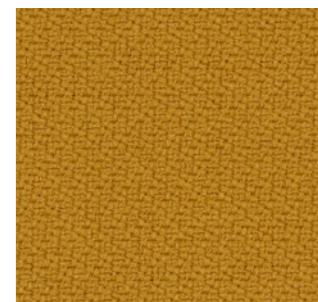
\*\*\*Batch to batch variations may occur within commercial tolerances.



**Note:**  
- The real colours and tones of the fabrics may differ from the digital image due to the scan process and the colour calibration of the different screens. Always request real fabric samples before ordering.  
- Consult our Fabric and Leather Matrix to know about the availability of this material by product line.



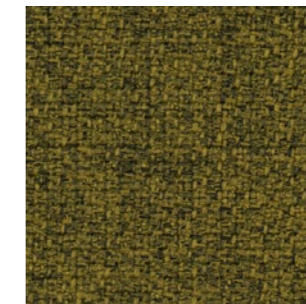
2442 - 64159



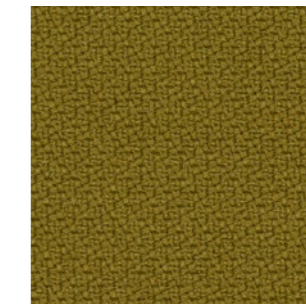
2440 - 62057



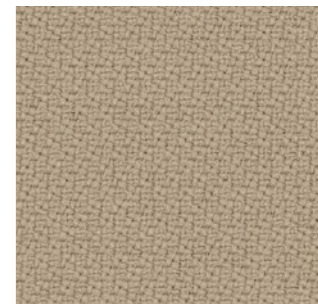
2442 - 68301



2442 - 68165



2440 - 68165



2440 - 61149



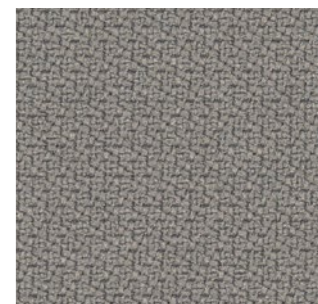
2442 - 60004



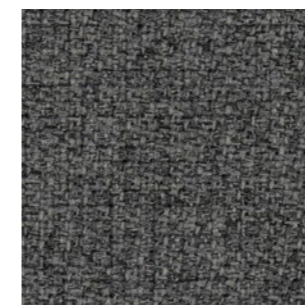
2442 - 67004



2440 - 60004



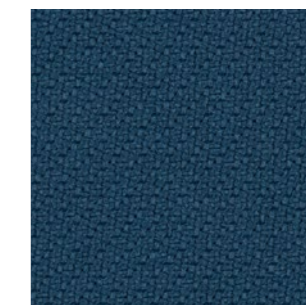
2440 - 60011



2442 - 60011



2442 - 66152



2440 - 66764



2440 - 60090



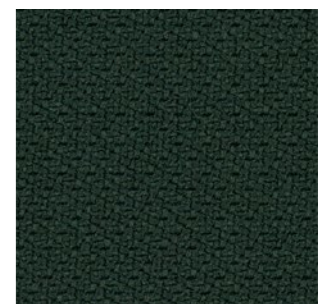
2442 - 61103



2442 - 60021



2440 - 60999



2440 - 68121

# G5 - DOLCE

By Spradling

## TECHNICAL DATA

**Composition:**

Topcoat: 100% polyurethane.

Backing: 100% rayon.

**Light fastness:**

40 hours, XENOTEST DIN 54004/NTC 1479.

**Abrasion:**

≥300.000 Martindale EN ISO 12947 Part 2.

**Cold crack resistance:**

-23°C.

**Characteristics:**

Antibacterial protection.

**Flammability:**

EU: EN 1021 Part 1 y 2

US: FMVSS 302

UK: BS 5852 Part 2 CRIB 5

IMO FTP 2010 Code MSC.307 (88) Part 8 3.1 & 3.2.

**Width:** 140cm

**Weight:** 685gr/m<sup>2</sup>



\*\*\*Batch to batch variations may occur within commercial tolerances.

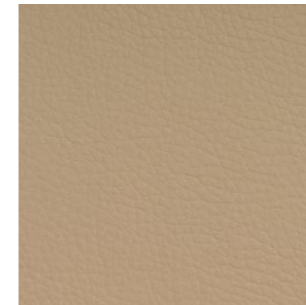
**Note:**

- The real colours and tones of the fabrics may differ from the digital image due to the scan process and the colour calibration of the different screens. Always request real fabric samples before ordering.

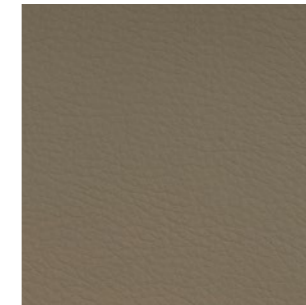
- Consult our Fabric and Leather Matrix to know about the availability of this material by product line.



6703



6706



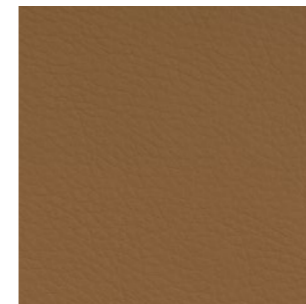
6708



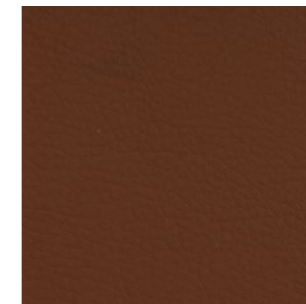
6719



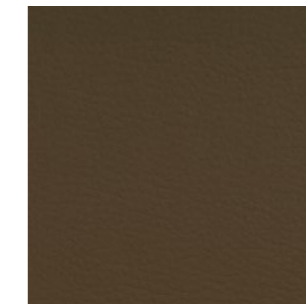
6714



6709



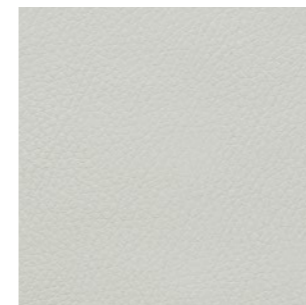
6711



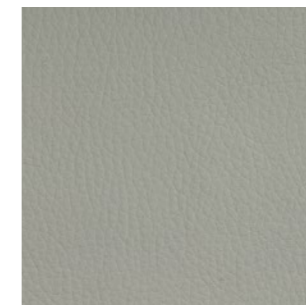
6712



6717



6729



6726



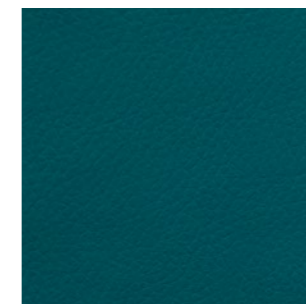
6727



6736



6735



6734



6724



6728

# G5 - SYNERGY

By Camira

## TECHNICAL DATA

**Composition:**

95% virgin wool, 5% polyamide.

**Light fastness:**

5, ISO 105-B02.

**Abrasion:**

≥100.000 Martindale EN ISO 12947.

**Fastness to rubbing:**

Wet 4.

Dry 4, ISO 105 X12.

**Flammability:**

EN 1021 - 1 (cigarette).

EN 1021 - 2 (match).

BS 7176 Low Hazard.

NF D 60-013.

ÖNORM B 3825 & A 3800-1 (sobre 58kg/m<sup>3</sup> Foam CMHR).

UNI 9175 Classe 1 IM.

EN 13501-1 Adhered Class D, s1, d0.

EN 13501-1 Un-adhered Class E, s2, d0.

IMO FTP Code (Part 8).

**Environment:**

Complies with EU Ecolabel.

Certificate Indoor Advantage™ Gold.

**Width:** 140cm

**Weight:** 400gr/m<sup>2</sup>



\*\*\*Batch to batch variations may occur within commercial tolerances.



**Note:**

- The real colours and tones of the fabrics may differ from the digital image due to the scan process and the colour calibration of the different screens. Always request real fabric samples before ordering.

- Consult our Fabric and Leather Matrix to know about the availability of this material by product line.



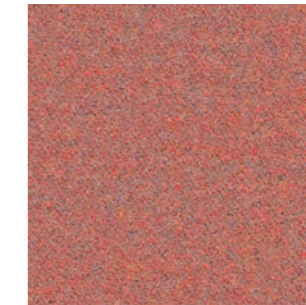
74



45



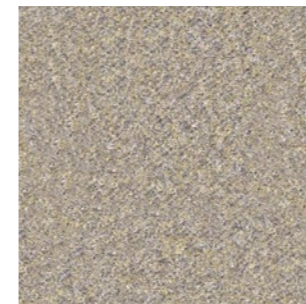
43



73



84



32



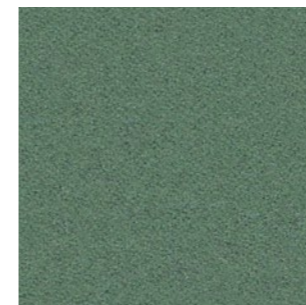
22



37



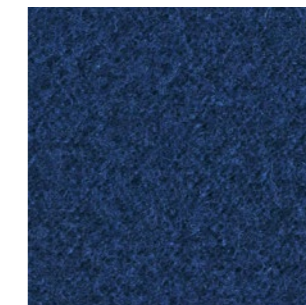
34



49



59



62



41



8



16



17



27

# G5 - REMIX

By Kvadrat

## TECHNICAL DATA

**Designer:**

Giulio Ridolfo.

**Composition:**

90% new wool, 10% nylon.

**Light fastness:**

5 - 7, ISO 105-B02.

**Abrasion:**

100.000 Martindale EN ISO 12947.

**Resistance to pilling:**

4, EN ISO 12945.

**Flammability:**

AS/NZS 1530.3.

BS 5852 part 1.

EN 1021-1/2.

IMO FTP Code 2010: Part 8.

NF D 60 013.

NFPA 260.

Önorm B1/Q1.

UNI 9175 11M.

US Cal. Bull. 117-2013.

**Environment:**

Complies with EU ecolabel "The Flower".

100% free of heavy metals.

**Width:** 140cm

**Weight:** 415gr/m<sup>2</sup>



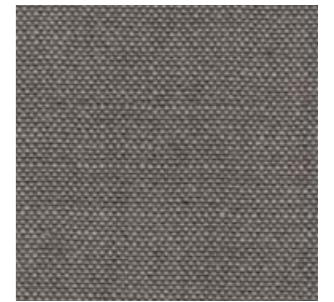
\*\*\*Batch to batch variations may occur within commercial tolerances.



**Note:**

- The real colours and tones of the fabrics may differ from the digital image due to the scan process and the colour calibration of the different screens. Always request real fabric samples before ordering.

- Consult our Fabric and Leather Matrix to know about the availability of this material by product line.



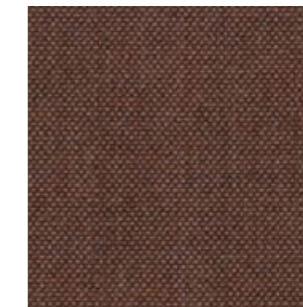
136



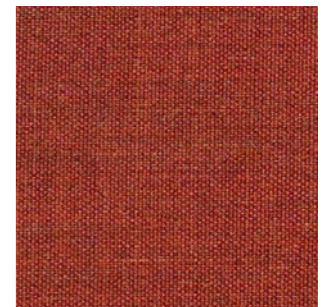
433



452



346



653



326



933



152



356



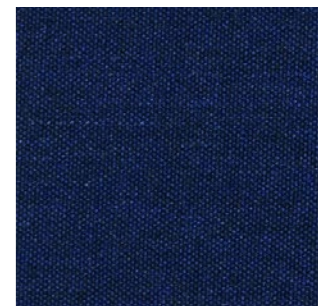
733



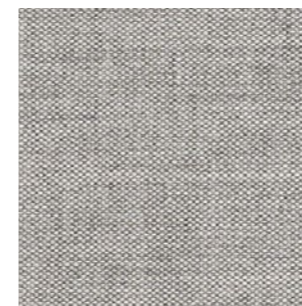
743



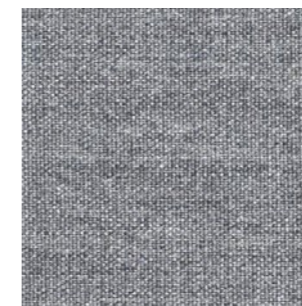
266



773



123



143



163



183

# G5 - CANVAS

By Kvadrat

## TECHNICAL DATA

**Designer:**

Giulio Ridolfo.

**Composition:**

90% new wool, 10% nylon.

**Light fastness:**

5 - 7, ISO 105-B02.

**Abrasion:**

100.000 Martindale EN ISO 12947.

**Resistance to pilling:**

4 - 5, EN ISO 12945.

**Flammability:**

AS/NZS 1530.3.

BS 5852 Crib 5 when flameprotected.

BS 5852, ignition source 3.

BS 5852 part 1.

DIN 4102 B2.

IMO FTP Code 2010: Part 8.

NF D 60 013.

NFPA 260.

Önorm B1/Q1.

UNI 9175 1IM.

US Cal. Bull. 117-2013.

**Environment:**

Complies with EU ecolabel "The Flower".

100% free of heavy metals.

**Width:** 140cm

**Weight:** 480gr/m<sup>2</sup>.



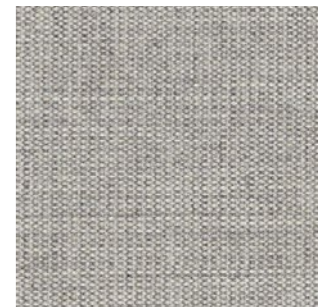
\*\*\*Batch to batch variations may occur within commercial tolerances.



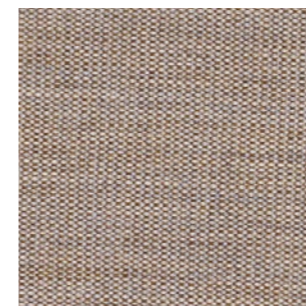
**Note:**

- The real colours and tones of the fabrics may differ from the digital image due to the scan process and the colour calibration of the different screens. Always request real fabric samples before ordering.

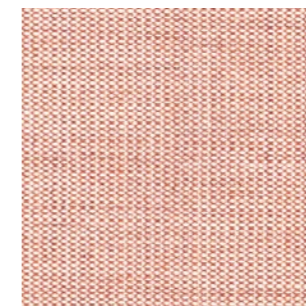
- Consult our Fabric and Leather Matrix to know about the availability of this material by product line.



124



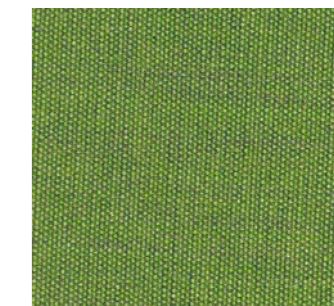
244



614



654



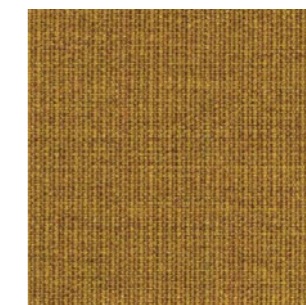
954



964



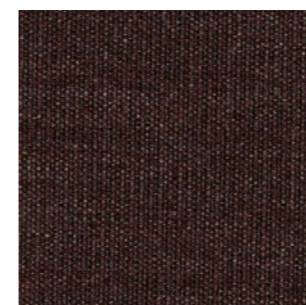
454



424



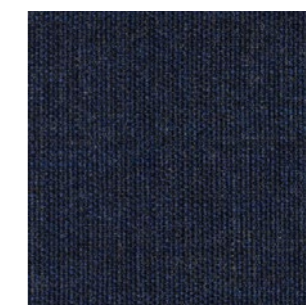
264



364



684



794



174

# G6 - STEELCUT TRIO

By Kvadrat

## TECHNICAL DATA

**Designer:**

Frans Dijkmeijer and Giulio Ridolfo.

**Composition:**

90% new wool, 10% nylon.

**Light fastness:**

5 - 7 ISO 105-B02.

**Abrasion:**

100.000 Martindale EN ISO 12947.

**Resistance to pilling:**

4, EN ISO 12945.

**Flammability:**

AS/NZS 1530.3

AS/NZS 3837 class 2.

BS 5852 part 1.

DIN 4102 B2.

EN 1021-1/2.

IMO FTP Code 2010: Part 8.

NF D 60 013.

NFPA 260.

Önorm B1/Q1.

UNI 9175 1IM.

US Cal. Bull. 117-2013.

**Environment:**

Complies with EU ecolabel "The Flower".

100% free of heavy metals.

**Width:** 140cm

**Weight:** 770gr/m<sup>2</sup>



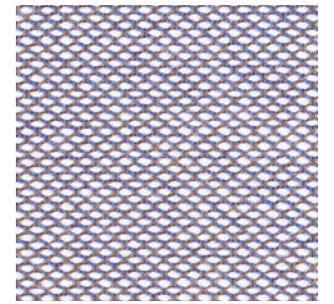
\*\*\*Batch to batch variations may occur within commercial tolerances.



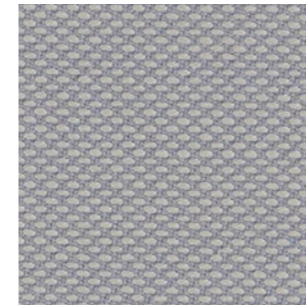
**Note:**

- The real colours and tones of the fabrics may differ from the digital image due to the scan process and the colour calibration of the different screens. Always request real fabric samples before ordering.

- Consult our Fabric and Leather Matrix to know about the availability of this material by product line.



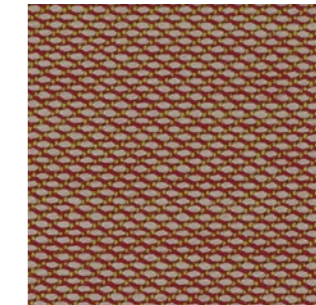
806



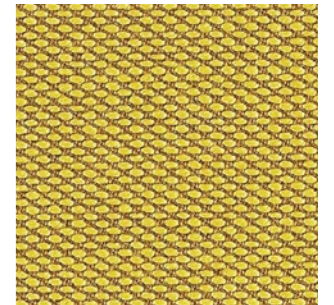
105



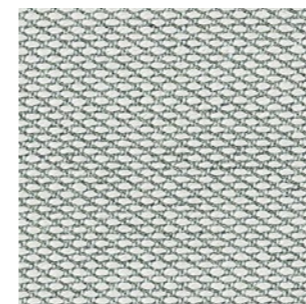
205



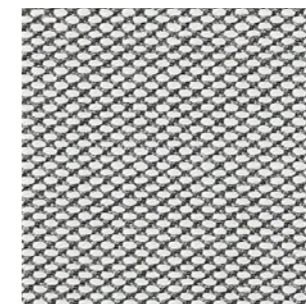
515



453



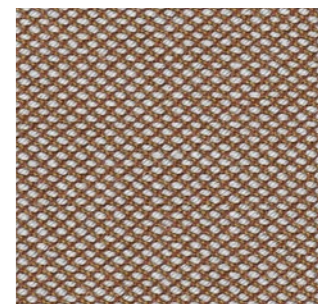
113



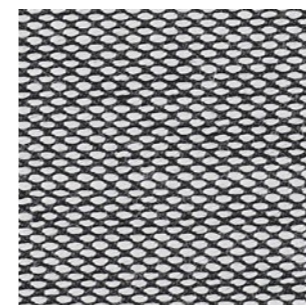
133



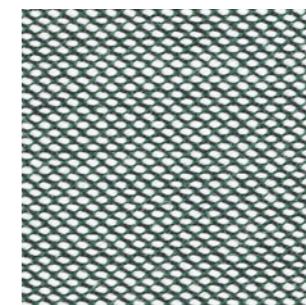
236



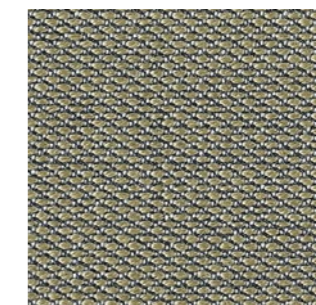
476



124



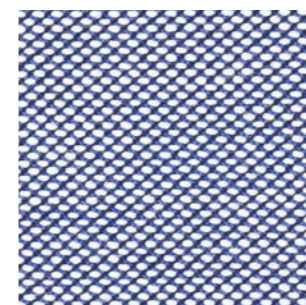
916



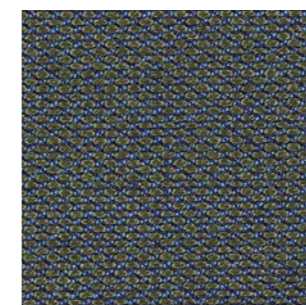
253



645



716



883



796



383

# G6 - FIORD

By Kvadrat

## TECHNICAL DATA

**Designer:**

Louise Sigvardt & Tone Barnung.

**Composition:**

92% new wool, 8% nylon.

**Light fastness:**

5 - 7, ISO 105-B02.

**Abrasion:**

60.000 Martindale EN ISO 12947.

**Resistance to pilling:**

4 - 5, EN ISO 12945.

**Flammability:**

- AS/NZS 3837 class 2.
- ASTM E84 Class A Adhered.
- ASTM E84 Class A Unadhered.
- BS 5852 part 1.
- EN 1021-1/2.
- IMO FTP Code 2010:Part 8.
- NF D 60 013.
- NFPA 260
- ÖNORM B1/Q1
- UNI 9175 1IM.
- US Cal. Bull. 117-2013.

**Environment:**

- Complies with EU ecolabel "The Flower"
- 100% free of heavy metals.

**Width:** 140cm

**Weight:** 500gr/m<sup>2</sup>



\*\*\*Batch to batch variations may occur within commercial tolerances.

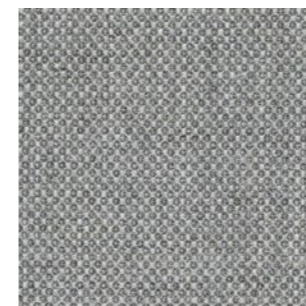


**Note:**

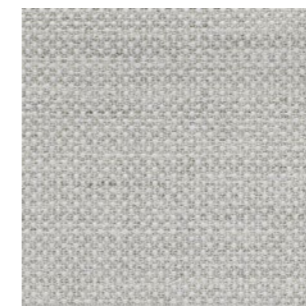
- The real colours and tones of the fabrics may differ from the digital image due to the scan process and the colour calibration of the different screens. Always request real fabric samples before ordering.
- Consult our Fabric and Leather Matrix to know about the availability of this material by product line.



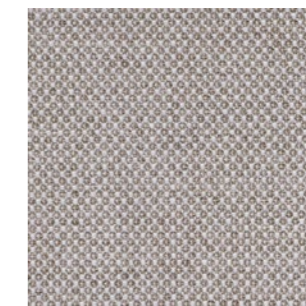
271



151



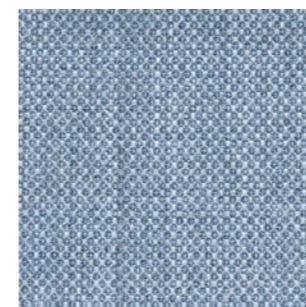
121



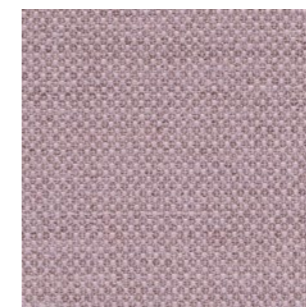
251



451



751



551



951



371



771



591



961



191

# G7 - HALLINGDAL

By Kvadrat

## TECHNICAL DATA

### Designer:

Nanna Ditzel.

### Composition:

70% new wool, 30% viscose.

### Light fastness:

5 - 7 ISO 105-B02.

### Abrasion:

100.000 Martindale EN ISO 12947.

### Resistance to pilling:

3, EN ISO 12945.

### Flammability:

AS/NZS 1530.3.

AS/NZS 3837.

BS 5852 Crib 5.

BS5852 part 1.

DIN 4102 B2.

EN 1021-1/2.

IMO FTP Code 2010: Part 8.

NF D 60 013.

NFPA 260.

Önorm B1/Q1.

UNI 9175 1IM.

US Cal. Bull. 117 - 2013.

### Environment:

Complies with EU ecolabel "The Flower".

Width: 140cm

Weight: 795gr/m<sup>2</sup>



\*\*\*Batch to batch variations may occur within commercial tolerances.



### Note:

- The real colours and tones of the fabrics may differ from the digital image due to the scan process and the colour calibration of the different screens. Always request real fabric samples before ordering.

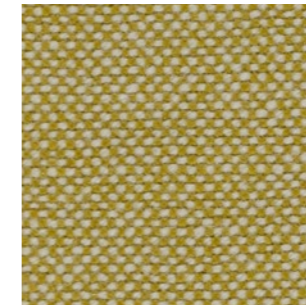
- Consult our Fabric and Leather Matrix to know about the availability of this material by product line.



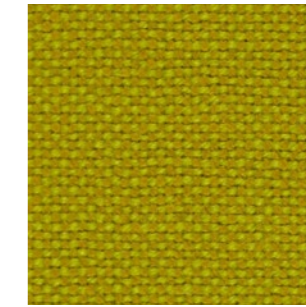
687



200



407



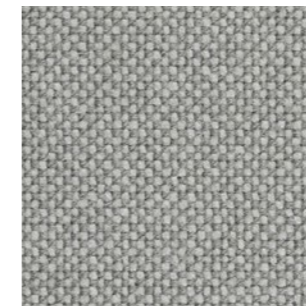
420



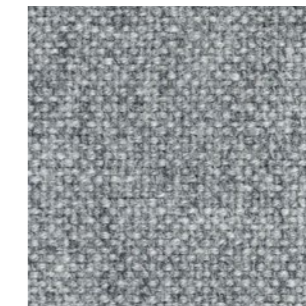
227



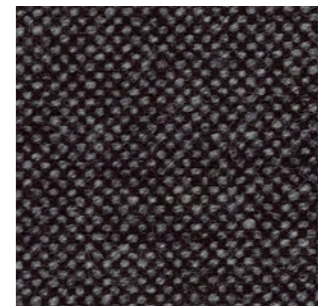
100



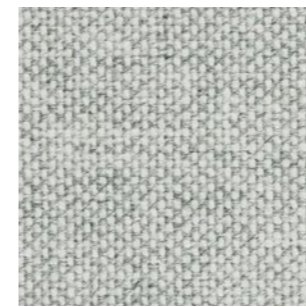
123



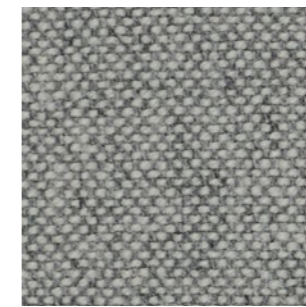
130



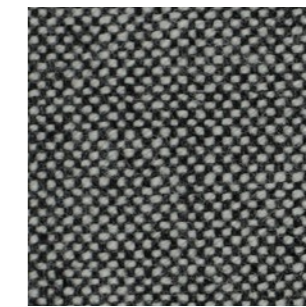
368



110



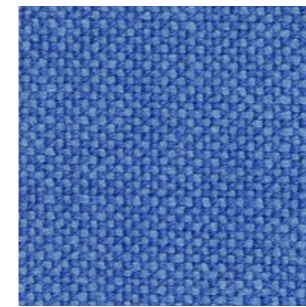
116



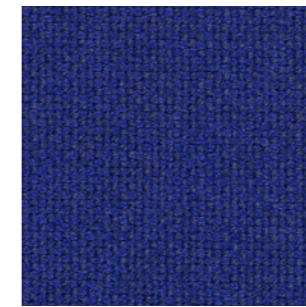
126



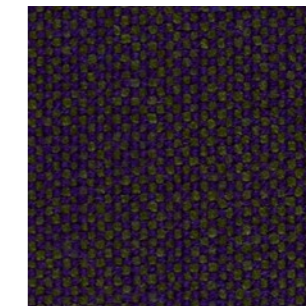
180



733



773



968



376

G7 - HALLINGDAL

# G10 - LEATHER

## TECHNICAL DATA

### Composition:

Cow leather.

### Light fastness:

≥4/5, UNI EN ISO 105B02.

### Fastness to rubbing:

Wet ≥4 (150 cycles).

Dry ≥4 (500 cycles).

Perspiration ≥4 (80 cycles), UNI EN ISO 11640 - 11641 (pH8).

### Tear strength:

>20N, EN ISO 3377-1.

### Determination of PH:

>3,5, EN ISO 4045.

### Adhesion of the finish:

≥2, UNI EN ISO 11644.

### Determination of dry ex resistance:

Without damage, UNI EN ISO 5402.

### Flammability:

Ignition source 0 (cigarette).

Ignition source 1 (match).

BS 5852-1979.

BS EN 1021-1-2.

### Thickness:

0,9 - 1,1mm

### Average surface:

4,8 - 5,0m<sup>2</sup>

### Maintenance:

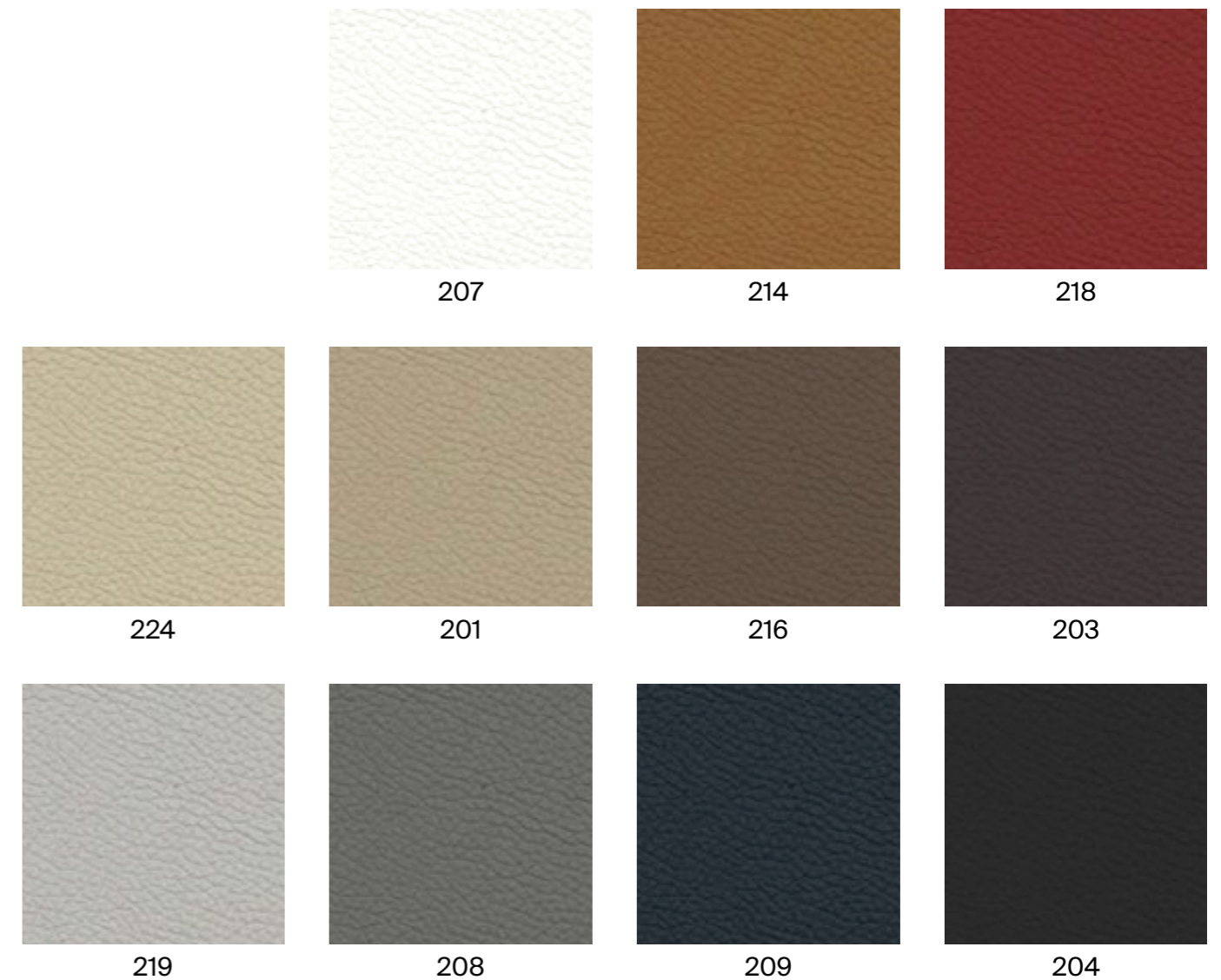
Wash with neutral soap and water or with a cleaning product for leather.

\*\*\*Batch to batch variations may occur within commercial tolerances.

### Note:

- The real colours and tones of the fabrics may differ from the digital image due to the scan process and the colour calibration of the different screens. Always request a real leather sample before ordering.

- Consult our Fabric and Leather Matrix to know about the availability of this material by product line.



# G11 - LEATHER

## TECHNICAL DATA

**Composition:**

Cow leather.

**Light fastness:**

≥5, UNI EN ISO 105B02.

**Fastness to rubbing:**

Wet ≥4 (80 cycles).

Dry ≥4 (500 cycles).

Perspiration ≥4 (50 cycles), UNI EN ISO 11640 - 11641.

**Tear strength:**

≥20N, EN ISO 3377-1.

**Determination of PH:**

≥3,5 ≤0,7 EN ISO 4045.

**Adhesion of the finish:**

≥2,5N / 10mm, UNI EN ISO 11644.

**Determination of dry flex resistance:**

>50.000 cycles, UNI EN ISO 5402-1.

**Flammability:**

Ignition source 0 (cigarette)

Ignition source 1 (match), BS 5852-1:79.

**Thickness:**

0,9 - 1,1mm

**Average surface:**

4,8 - 5,0m<sup>2</sup>

**Maintenance:**

Wash with neutral soap and water or with a cleaning product for leather.

\*\*\*Batch to batch variations may occur within commercial tolerances.

Note:

- The real colours and tones of the fabrics may differ from the digital image due to the scan process and the colour calibration of the different screens. Always request a real leather sample before ordering.

- Consult our Fabric and Leather Matrix to know about the availability of this material by product line.

